

Appendices

Appendix 1 Table – Medians, mean values and standard deviations of hematological parameters of robust capuchin monkeys (*Sapajus*) in home captivity in the state of Ceará for the three obese adult males

Hematological parameters	6Kg	8.46Kg	8.79Kg	Median	Mean	SD
Erythrocytes (x10 ⁶ /μL)	6.14	5.43	6.54	6.14	6.04	0.56
Hemoglobin (g/dL)	14.2	12.4	16.5	14.2	14.37	2.06
Haematocrit (%)	51.6	43.4	50.5	50.5	48.5	4.45
MCV (fl)	84.04	79.93	77.2	79.93	80.39	3.44
MCHC (%)	27.52	28.57	32.7	28.57	29.60	2.74
Leukocytes (x10 ³ /μL)	5.1	12.2	7.5	7.5	8.27	3.61
Neutrophils (x10 ³ /μL)	1.89	2.07	5.02	2.07	2.99	1.76
Rods (x10 ³ /μL)	0	0	0	0	0	0.00
Lymphocytes (x10 ³ /μL)	2.6	9.76	1.65	2.6	4.67	4.43
Monocytes (x10 ³ /μL)	0.51	0.37	0.75	0.51	0.54	0.19
Eosinophils (x10 ³ /μL)	0.1	0	0.07	0.07	0.06	0.05
Basophils (x10 ³ /μL)	0	0	0	0	0	0.00
Platelets (x10 ³ /μL)	160	204	194	194	186	23.07
MPV (fl)	12.3	10.8	-	11.55	11.55	1.06
Total Proteins (g/dL)	7.53	7.87	-	7.7	7.7	0.24

Appendix 2 - Table – Mean values. standard deviations. medians and ranges of hematological parameters of captive capuchin monkeys (*Sapajus*) in homes in the state of Ceará including three obese adult males.

Haematological parameters	N	Mean	SD	Median	Min – Max
Erythrocytes (x10 ⁶ /μL)	35	5.07	0.83	4.99	1.82 - 6.54
Hemoglobin (g/dL)	35	12.14	2.12	12.1	4.3 - 16.5
Haematocrit (%)	35	39.59	6.15	40	18.2 - 51.6
MCV (fl)	35	78.86	6.86	76.9	67.8 – 100
MCH (pg)	35	23.87	1.49	23.7	22 – 26
MCHC (%)	35	30.55	2.66	31.6	23.63 - 34.4
RDW (%)	12	14.64	1.09	14.3	13.3 - 16.7
Leukocytes (x10 ³ /μL)	35	8.26	3.1	7.2	3 – 15.4
Neutrophils (x10 ³ /μL)	35	3.92	1.8	3.82	0.84 – 8.78
(%)		48			
Rods (x10 ³ /μL)	35	0	0.02	0	0 – 0.12
(%)		0			
Lymphocytes (x10 ³ /μL)	35	3.7	1.88	3.24	1.83 – 9.76
(%)		45			
Monocytes (x10 ³ /μL)	35	0.48	0.37	0.38	0 – 1.39
(%)		5.5			
Eosinophils (x10 ³ /μL)	35	0.14	0.31	0.07	0 – 1.8
(%)		1.5			
Basophils (x10 ³ /μL)	35	0	0	0	0
(%)		0			
Platelets (x10 ³ /μL)	35	230	77.06	251	76 – 349
MPV (fl)	12	11.16	0.73	10.95	9.9 - 12.6
Total Proteins (g/dL)	23	7.56	0.7	7.4	6.8 - 9.95

Appendix 3 - Table – Parameters with significant and/or strongly suggestive differences among the different categories of *Sapajus* studied when including obese animals.

Parameters with significant and/or strongly suggestive differences						
Category	Parameters	Median	Median	U	P	
Sex	Females(<i>n</i> =20)		Males(<i>n</i> =15)			
	Erythrocytes	4.84	5.43	94	0.06	
	Hemoglobin	11.5	12.8	86.5	0.03	
	Haematocrit	38.75	43	92.5	0.05	
	Adult Females (<i>n</i> =10)		Adult Males (<i>n</i> =8)			
	Erythrocytes	4.79	5.5	17	0.08	
	Hemoglobin	11.45	12.5	17	0.08	
	Neutrophils	3.65	2.09	16	0.07	
	Young females (<i>n</i> =8)		Young males (<i>n</i> =7)			
	-	-	-	-	-	-
	Young(<i>n</i> =15)		Adults(<i>n</i> =17)			
	Leukocytes(x10 ³ /μL)	7.9	6.5	78.5	0.06	
	Neutrophils(x10 ³ /μL)	4	2.61	80	0.07	
Age	Young Females (<i>n</i> =8)		Adult Females (<i>n</i> =10)			
	MCV (fl)	72.75	78.4	20	0.08	
	Young Males (<i>n</i> =7)		Adult Males (<i>n</i> =7)			
	Neutrophils(x10 ³ /μL)	4.05	2.09	9	0.05	
Status	Dehydrated(<i>n</i> =22)		Hydrated(<i>n</i> =13)			

Duarte et al, hematology Capuchins as pet, appendix

Erythrocytes	4.89	5.28	90.5	0.07
MCV	81.02	75.6	81.5	0.03
MCHC (%)	30.58	32	83.5	0.04
	In cages(<i>n</i> =9)	Chained(<i>n</i> =26)		
-	-	-	-	-

Appendix 4: Mean weight and Total length of individuals by separating confirmed *S. libidinosus* and those with uncertain species classification

Mean TT length						
	female			male		
	Adult	juvenile	Senior	Adult	juvenile	Senior
<i>S. apella</i> (n= 7)	79.5		80.5	88.33	82	
	(n=2)		(n=1)	(n=3)	(n=1)	
<i>S. libidinosus</i>	85.11	79.62		85.25	84.83	21*
(n= 25)	(n=9)	(n=8)		(n=7)	(n=7)	(n=1)

Mean Weight						
Species	female			male		
	Adult	juvenile	Senior	Adult	juvenile	Senior
<i>S. apella</i> (n = 7)	1.9		2.2	7.75	1,5	
	(n= 2)		(n=1)	(n= 3)	(n = 1)	
<i>S. libidinosus</i>	2.15	1.86		1.96	2.14	3.53
(n= 21)	(n = 9)	(n= 8)		(n = 4)	(n = 6)	(n = 1)

*Animal without tail

Appendix 5: Photos of individuals sampled for hematological research

Chica 1 - *Sapajus libidinosus* - kept chained to a tree in the backyard of the house



Chica 2 - *Sapajus libidinosus* - kept chained to a tree in the backyard of the house



Chicó 3 -*Sapajus libidinosus* ou apella - kept chained in the backyard of the house



Chico 4 - *Sapajus libidinosus* - kept in a cage tied to a tree in the backyard of the house



Chica 5 - Sapajus libidinosus - kept chained to a tree in the backyard of the house



Chica 6 - *Sapajus libidinosus* - kept chained inside the house



Chica 7 - *Sapajus libidinosus* - kept chained to a tree in the backyard of the house



Chica 8 - *Sapajus libidinosus* - kept chained to a tree in the backyard of the house



Chica 9 - *Sapajus libidinosus* - kept chained inside the house



Chico 10 - *Sapajus libidinosus* - kept chained to a fence in the backyard of the house



Nica 11 - *Sapajus libidinosus* ou apella - kept in a cage in the backyard of the house



Chica 12 - *Sapajus libidinosus* - kept chained in the garage of the house



Chica 13 - *Sapajus libidinosus* - kept chained and locked with a padlock in the backyard of the house



Chica 14 - *Sapajus libidinosus* ou apella - kept in a cage in the backyard of the house



Chica 15 - *Sapajus libidinosus* - kept in a cage in the backyard of the house.



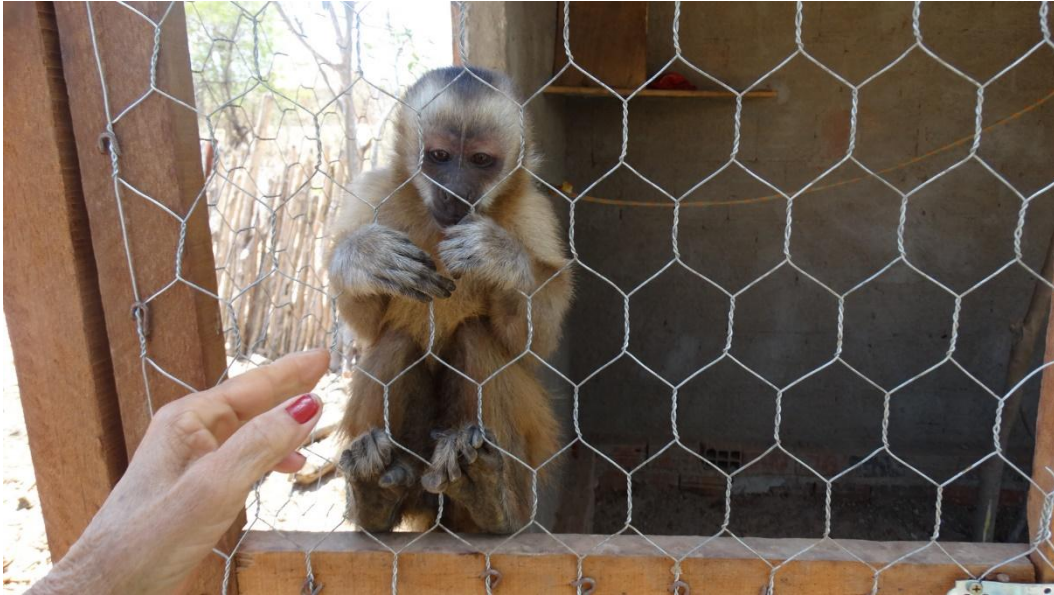
Chica 16 e Chico 17 - *Sapajus libidinosus* - kept chained to a tree in the backyard of the house



Chico 18 - *Sapajus libidinosus* - kept chained to a tree in the backyard of the house



Gigo 19 - *Sapajus libidinosus* - kept in a cage in the backyard of the house



Chica 20 - *Sapajus libidinosus* - kept chained to a tree in the backyard of the house



Chica 21 - *Sapajus libidinosus* - kept chained in the backyard of the house



Chico 22 - *Sapajus libidinosus* ou apella - kept chained to a tree in the backyard of the house



Chico 23 - *Sapajus libidinosus* ou apella - kept chained to a tree in the backyard of the house



Chica 24 - *Sapajus libidinosus* ou apella - kept chained to a tree in the backyard of the house



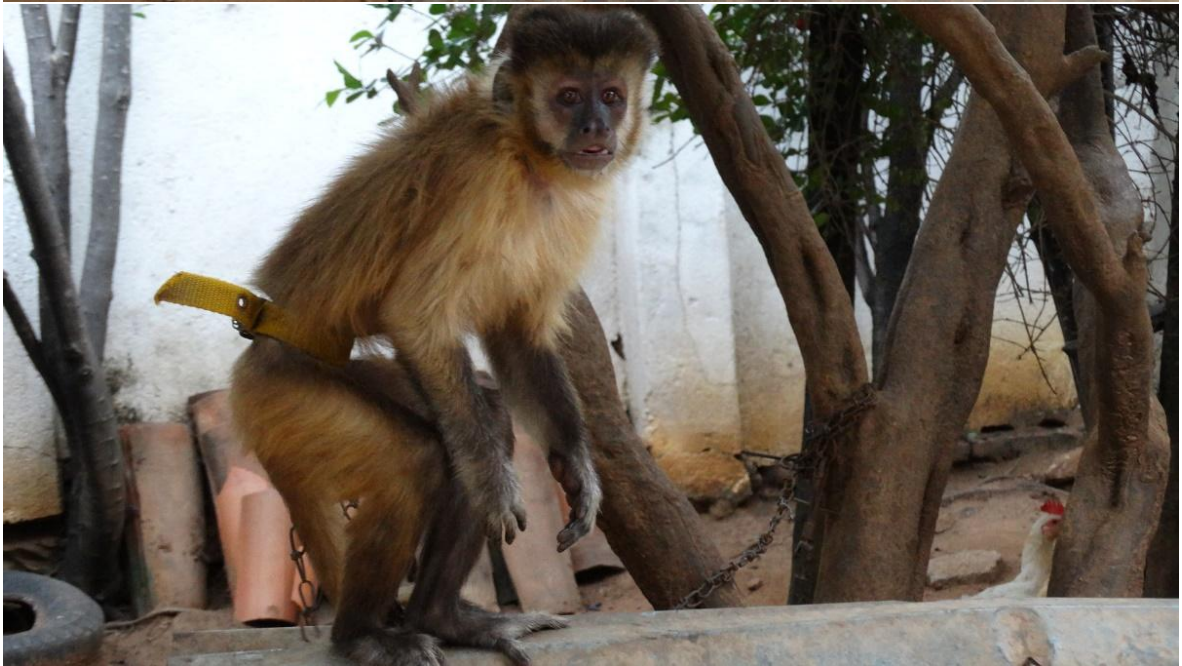
Cido 25 - *Sapajus libidinosus* ou apella - kept chained to a tree in the backyard of the house.



Chico 26 - *Sapajus libidinosus* - kept chained to a tree in the backyard of the house



Junia 27 - *Sapajus libidinosus* - kept chained to a tree in the backyard of the house



Raly 28 - *Sapajus libidinosus* - kept chained in the backyard of the house



Chico 29 - *Sapajus libidinosus* - kept chained in the backyard of the house



Chico 30 - *Sapajus libidinosus* - kept chained to a tree in the backyard of the house



Boneca 31 - *Sapajus libidinosus* - kept chained to a tree in the backyard of the house



Chica 32 - *Sapajus libidinosus* - kept chained in the backyard of the house



Chica 33 - *Sapajus libidinosus* - kept chained to a tree in the backyard of the house



Chica 34 - *Sapajus libidinosus* - kept chained in the backyard of the house



Chico 35 - *Sapajus libidinosus* - kept chained to a tree in the backyard of the house

