

Efecto de la fragmentación y composición del paisaje sobre la presencia de *Ateles fusciceps rufiventris* en Colombia. Alma Hernández-Jaramillo, Juan Carlos Serio-Silva y Sam Shanee

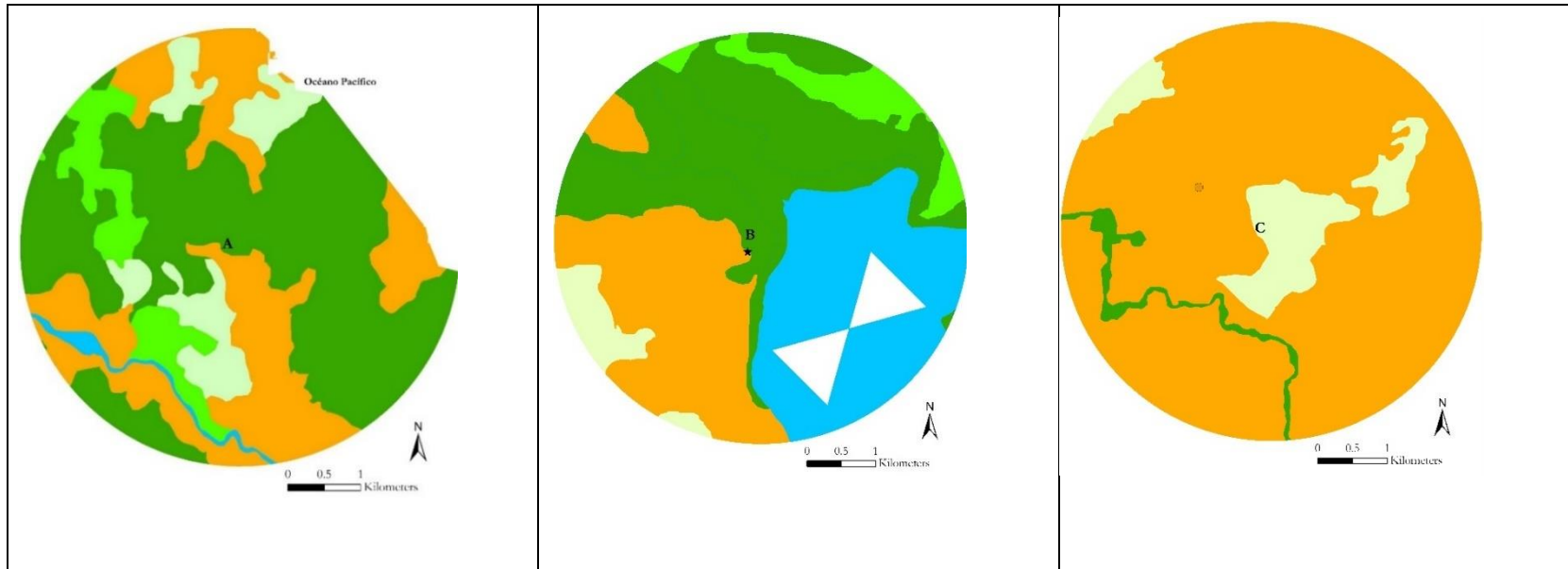
Tabla S1. Prueba de normalidad Shapiro-Wilk

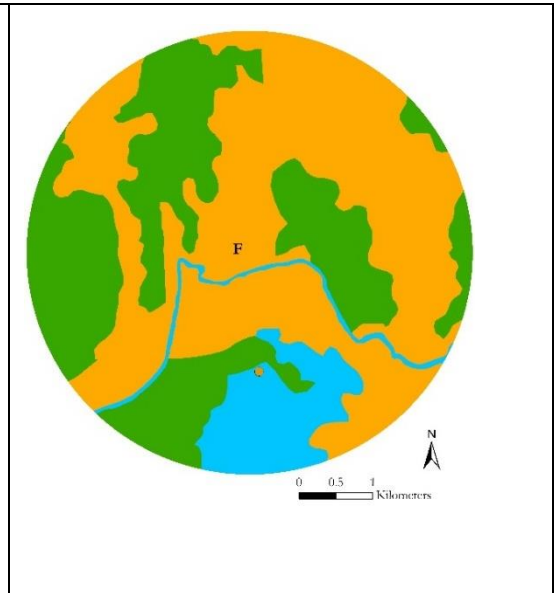
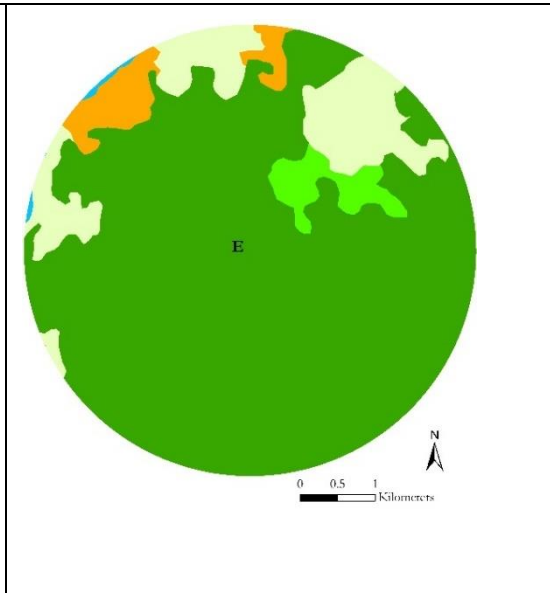
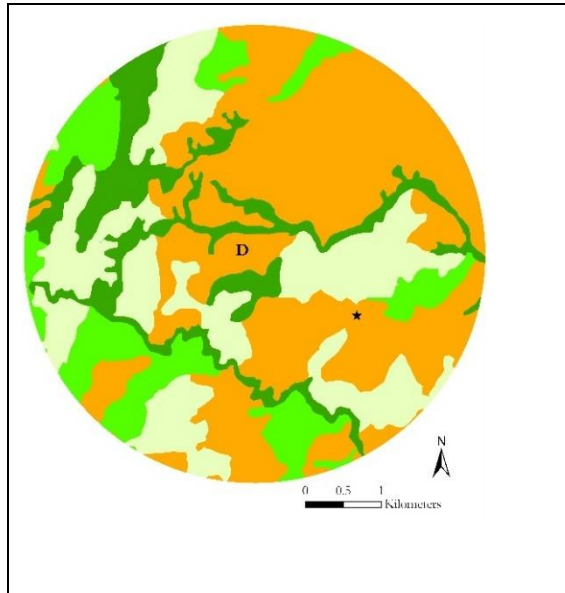
	W	p
PD	0.919	0.066
CONNECT	0.966	0.596
LPI	0.931	0.115
SHDI	0.93	0.112
SHEI	0.974	0.796
Bosque	0.93	0.111
D_AHU	0.909	0.039

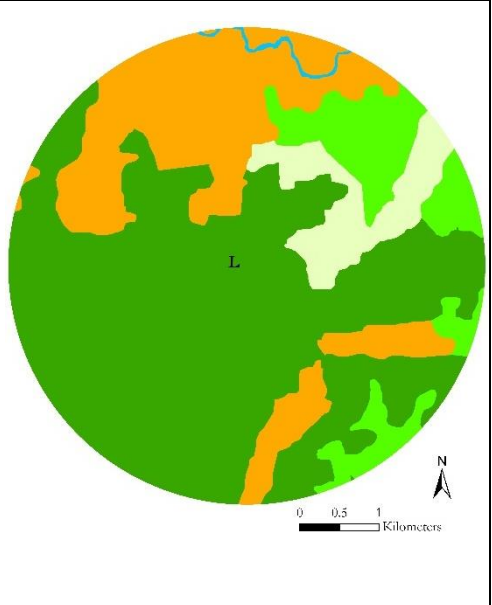
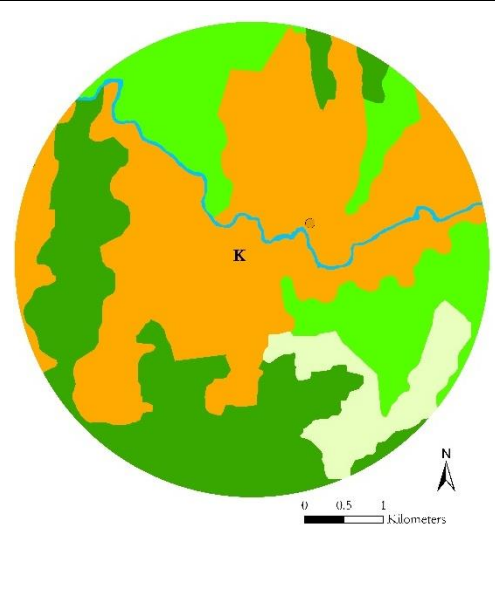
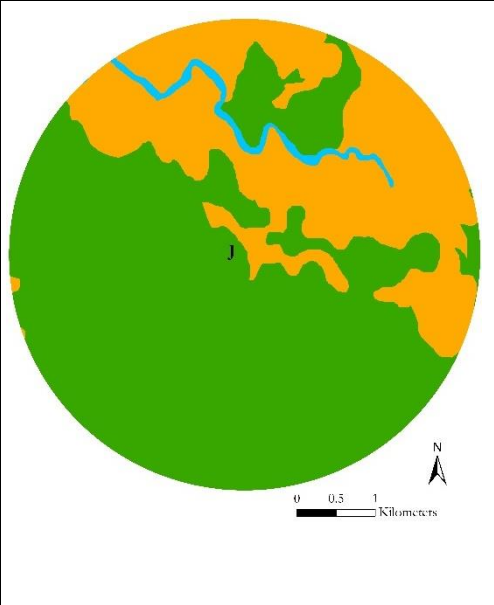
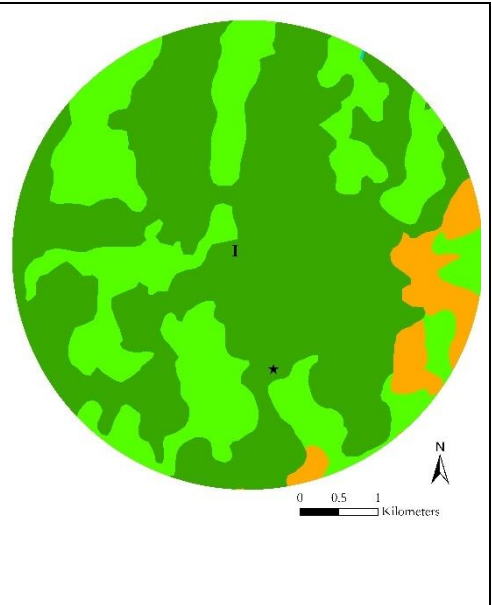
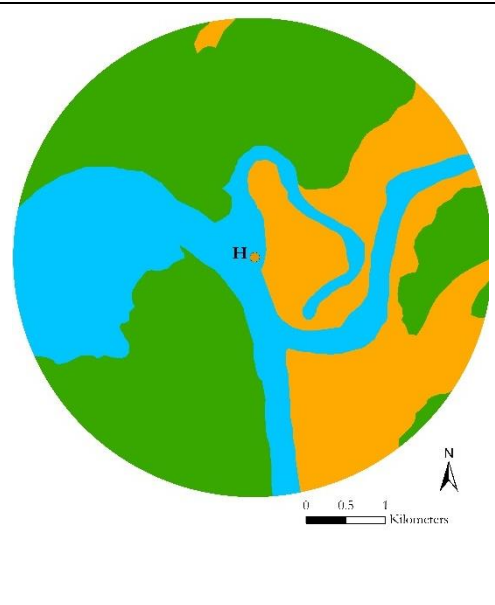
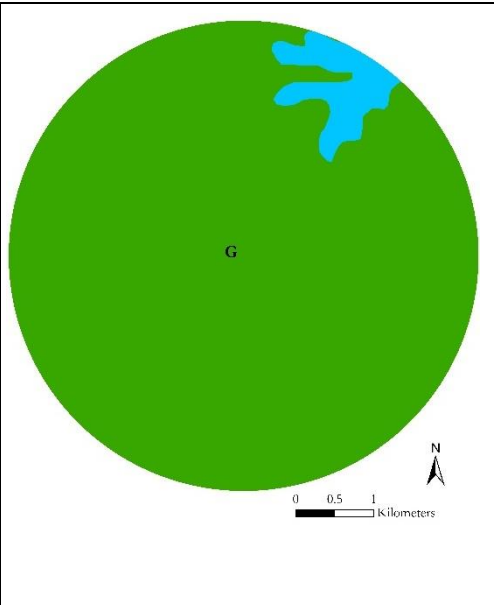
Tabla S2. Correlación método Spearman

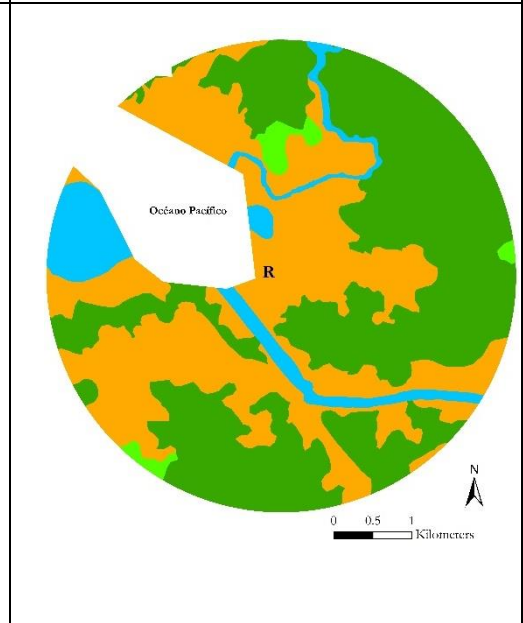
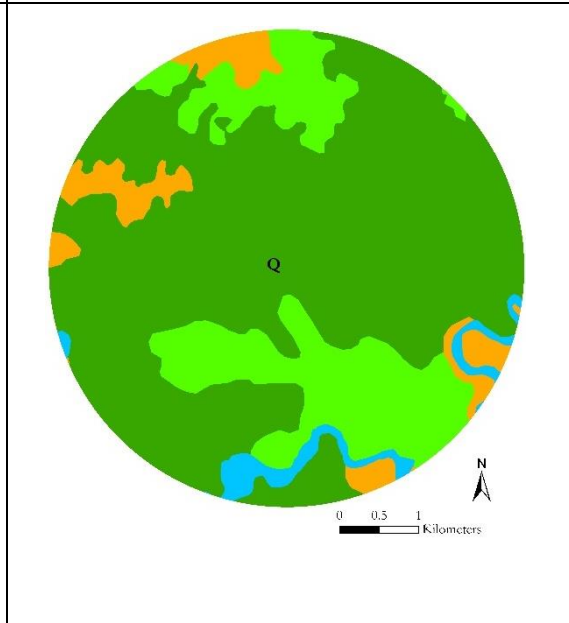
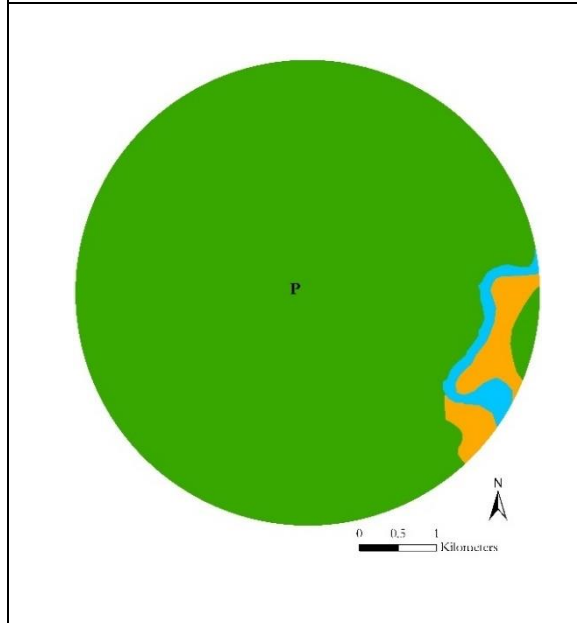
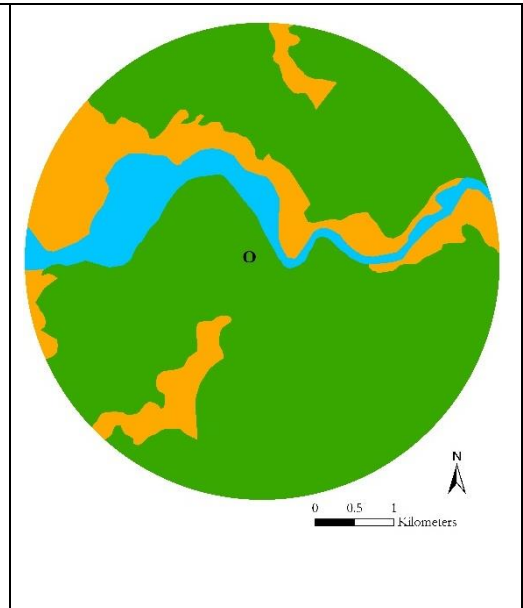
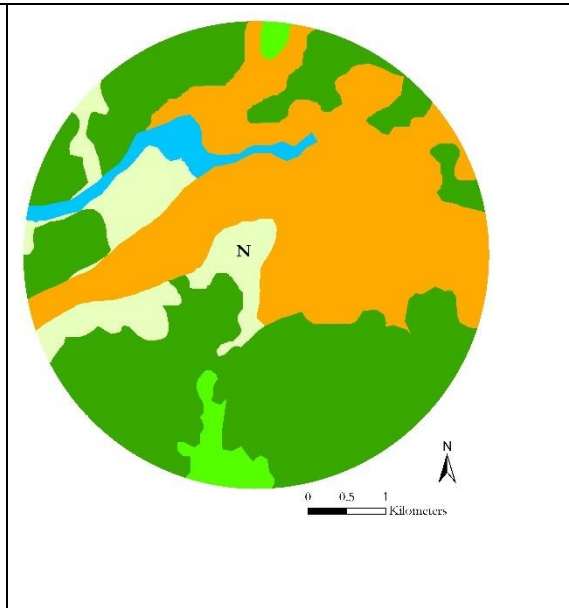
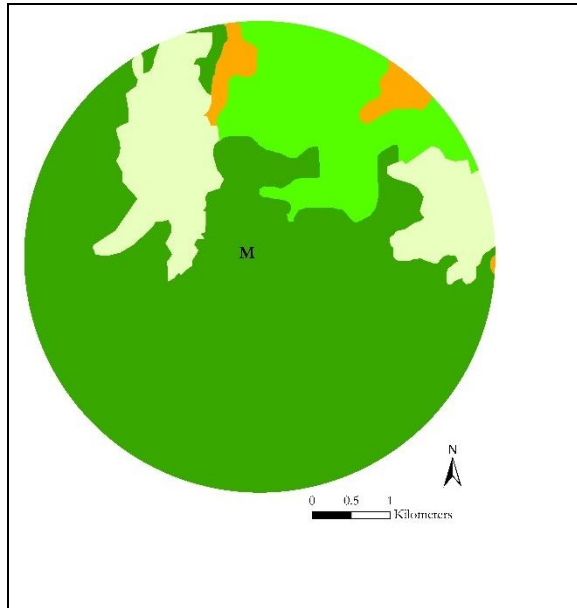
	PD	CONNECT	LPI	SHDI	SHEI	Bosque	D_AHU
PD	1	0.41	-0.5	0.3	0.33	-0.19	-0.3
CONNECT	0.41	1	-0.08	-0.08	-0.05	-0.01	-0.06
LPI	-0.5	-0.08	1	-0.79	-0.73	0.28	0.41
SHDI	0.3	-0.08	-0.79	1	0.62	-0.21	-0.23
SHEI	0.33	-0.05	-0.73	0.62	1	-0.49	-0.48
Bosque	-0.19	-0.01	0.28	-0.21	-0.49	1	0.57
D_AHU	-0.3	-0.06	0.41	-0.23	-0.48	0.57	1

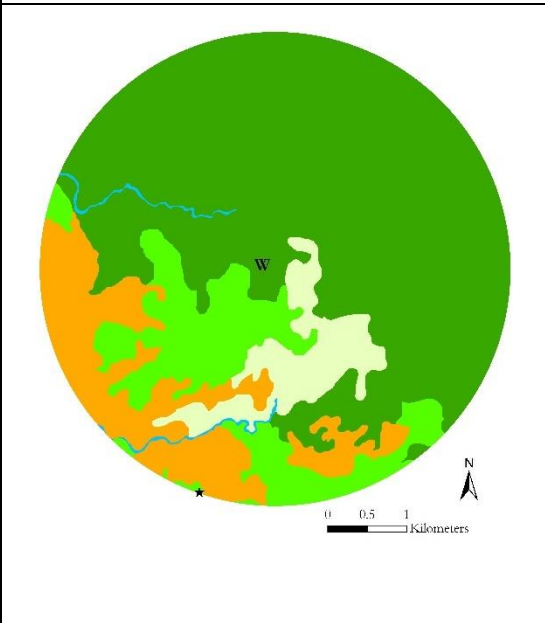
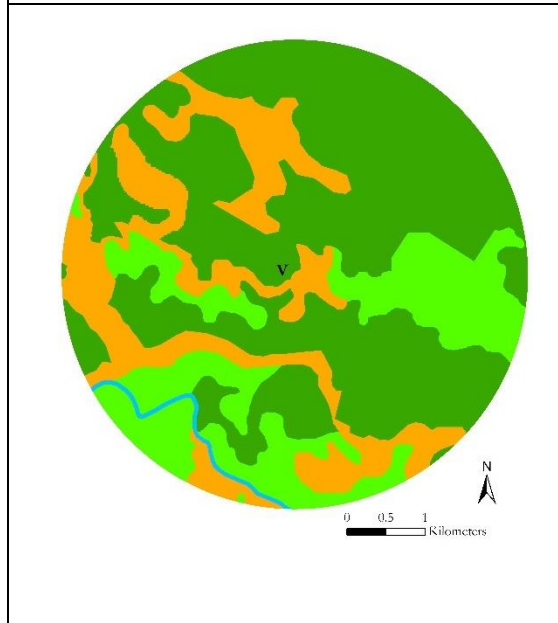
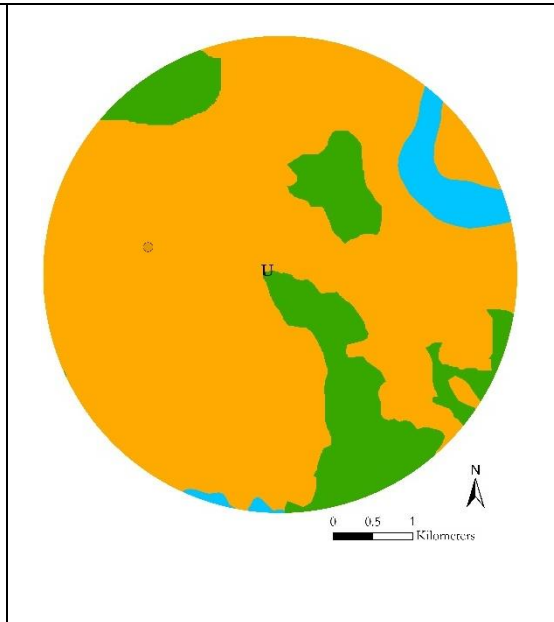
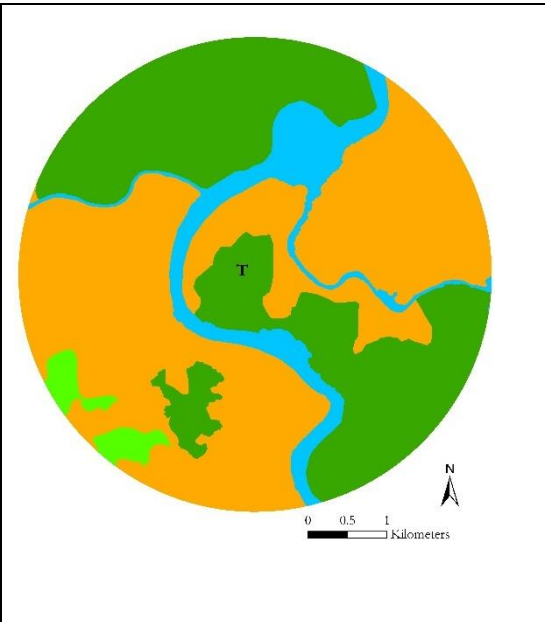
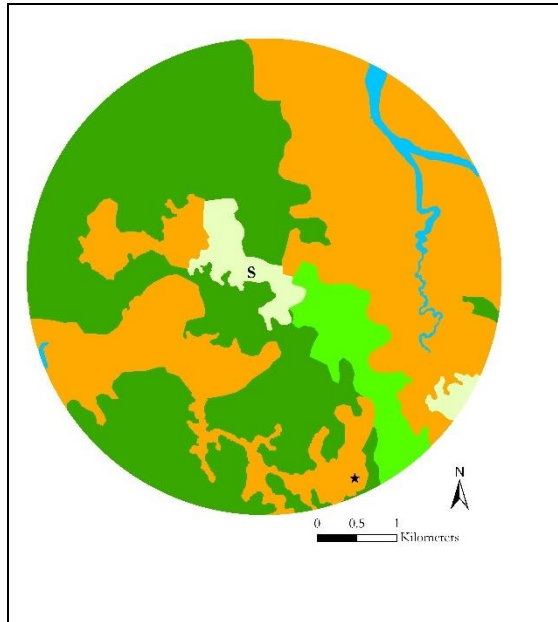
Figura S1. Detalle de la cobertura de cada localidad analizada. Los lugares con estrella son sitios en los que se verificó la presencia de *Ateles fusciceps rufiventris*











Leyenda

- Bosque
- Bosque fragmentado
- Agroecosistema
- Vegetación secundaria
- Agua